



# INDOFINE Chemical Company, Inc.

121 Stryker Lane, Bldg. 30, Suite 1 • Hillsborough, NJ 08844 • U.S.A.

Phone: (908) 359-6778 • FAX: (908) 359-1179

website: [www.indofinechemical.com](http://www.indofinechemical.com)

e-mail: [chemical@indofinechemical.com](mailto:chemical@indofinechemical.com)

## CERTIFICATE OF ANALYSIS

Catalog Number: 06-1210

Product Name: **SOLASONINE**  
(Solasodamine)

CAS Number: [19121-58-5]

Lot Number: 2003405

Chemical Formula: C<sub>45</sub>H<sub>73</sub>NO<sub>16</sub>

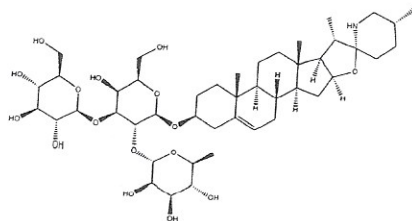
Molecular Weight: 884.07

Appearance: Off-white powder

Loss on Drying: 1.3%

Storage: Store at 2-8°C. Protect from light.

Purity(HPLC): 99.25%



Prepared by:  
Ramesh Mandadi  
Ramesh Mandadi  
Director of Operations

Reviewed and Approved by:  
Sujata Moton  
Sujata Moton  
VP



# INDOFINE Chemical Company, Inc.

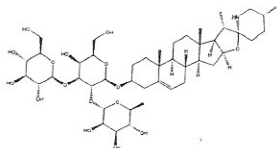
121 Stryker Lane, Bldg. 30, Suite 1 • Hillsborough, NJ 08844 • U.S.A.

Phone: (908) 359-6778 • FAX: (908) 359-1179

website: [www.indofinechemical.com](http://www.indofinechemical.com)

e-mail: [chemical@indofinechemical.com](mailto:chemical@indofinechemical.com)

## HPLC ANALYSIS



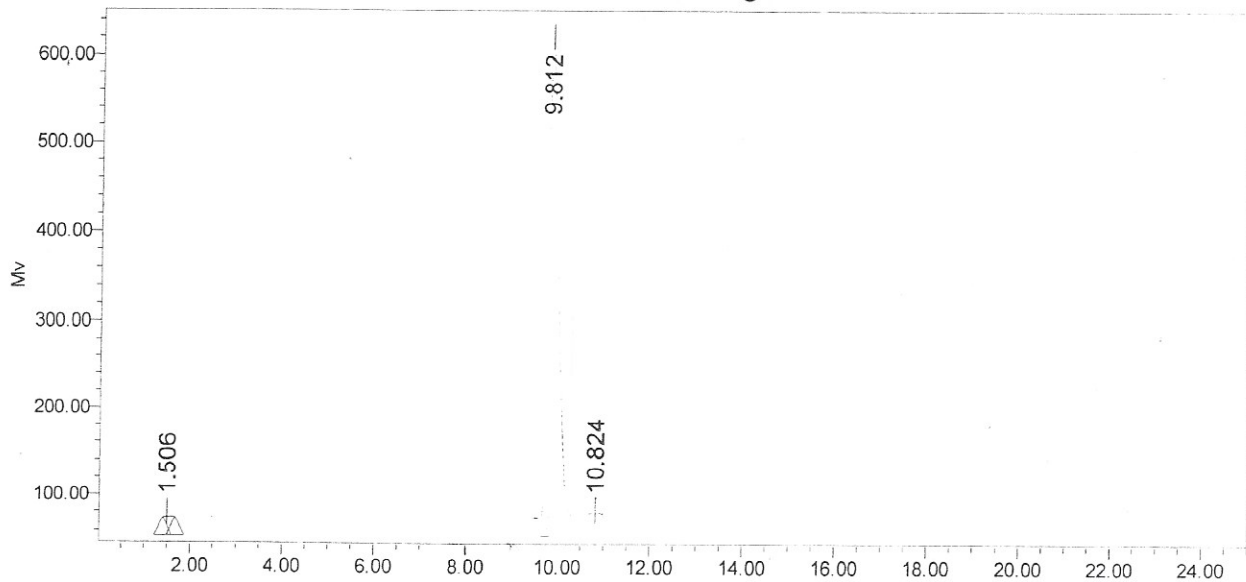
Catalog No.: 06-1210  
Product Name: Solasonine  
Lot No.: 2003405

### SAMPLE INFORMATION

Sample Name: Solasonine  
Sample Type:  
Vial: 2  
Injection #: 1  
Injection Volume: 10.00 ul  
Run Time: 25.0 Minutes

Acquired By: prf01  
Sample Set Name:  
Acq. Method Set: Solasonine  
Processing Method: sample  
Channel Name: SATIN  
Proc. Chnl. Descr.:

Auto-Scaled Chromatogram



Peak Results

Name	RT	Area	% Area	USP Plate Count	USP Resolution
1	1.506	38018	0.46	1234.75	
2	9.812	8152070	99.25	8289.10	28.27
3	10.824	23207	0.28	80223.39	3.38

Prepared by:  
Ramesh Mandadi  
Ramesh Mandadi  
Director of Operations

Reviewed and Approved by:  
Sujata Moton  
Sujata Moton  
VP